



Technical Announcement

IABG, DELTA ELECTRONICS, INC

Product	CANopen Builder	Applicable Model	DVP15MC11T, DVP10MC11T, DVPCOPM-SL, 32ES2-C	Confidentiality Level	<input checked="" type="checkbox"/> General <input type="checkbox"/> Classified <input type="checkbox"/> Top secret
				ECN No.	N/A
Published by	PLC BU	Publisher	Wolf Zhao	Publication No.	134A-P-CANopen Builder-TAN06-EN
				Date of Publication	Jun 6, 2017
Published to	Sales/Product managers of TW, DGC, DPR, DGB, DMX, DEN, DIN, DESG, DEJ, DEK				

Object: CANopen Builder V6.0 is released.

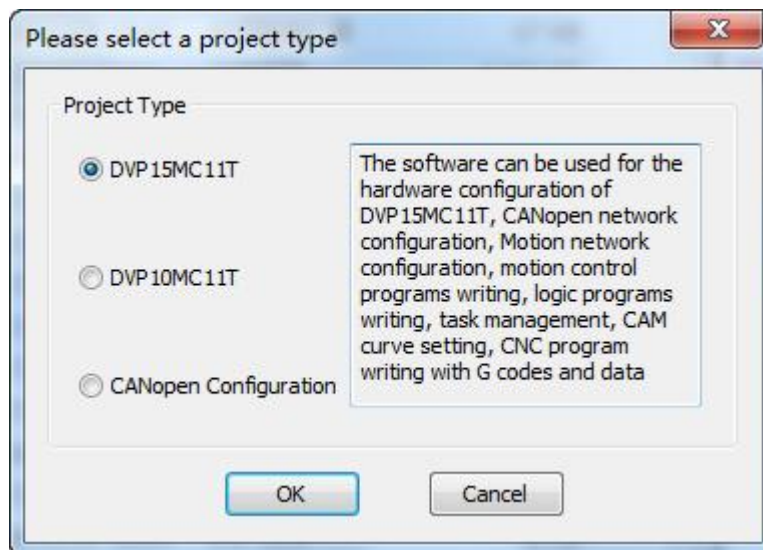
Purpose: The functions which are modified, and the functions which are added are described.

Description:

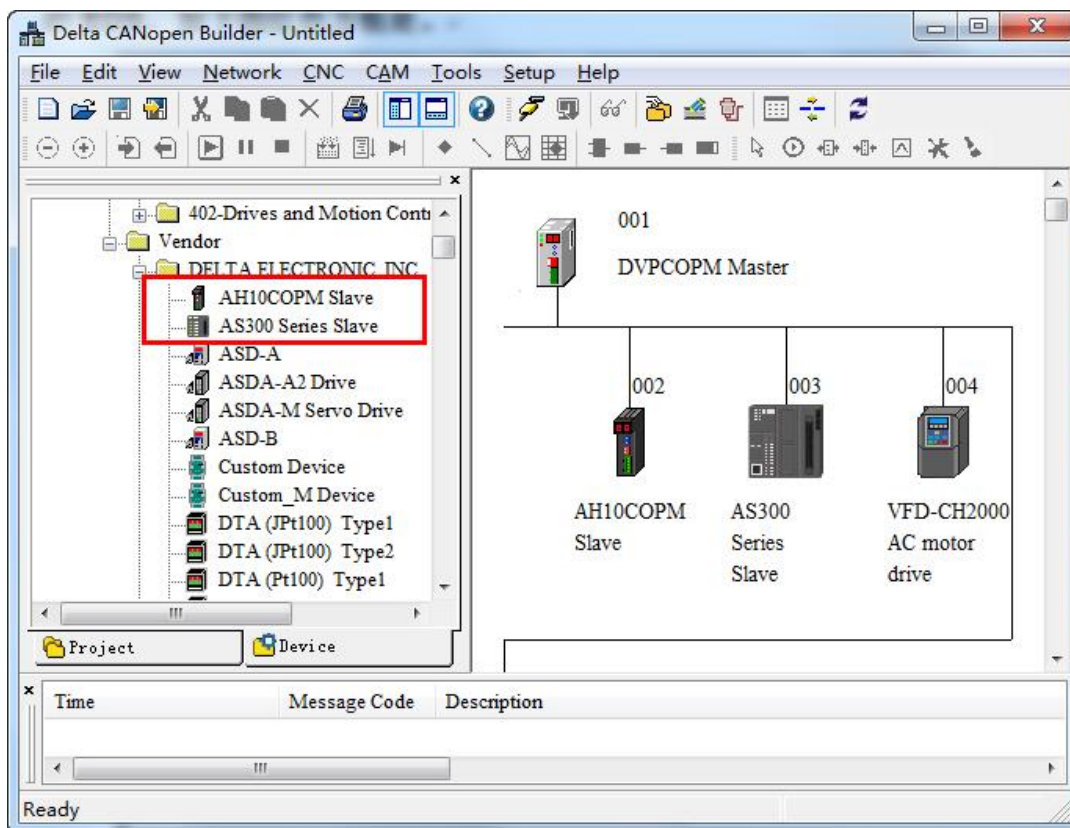
1. **The model DVP15MC11T is added.**

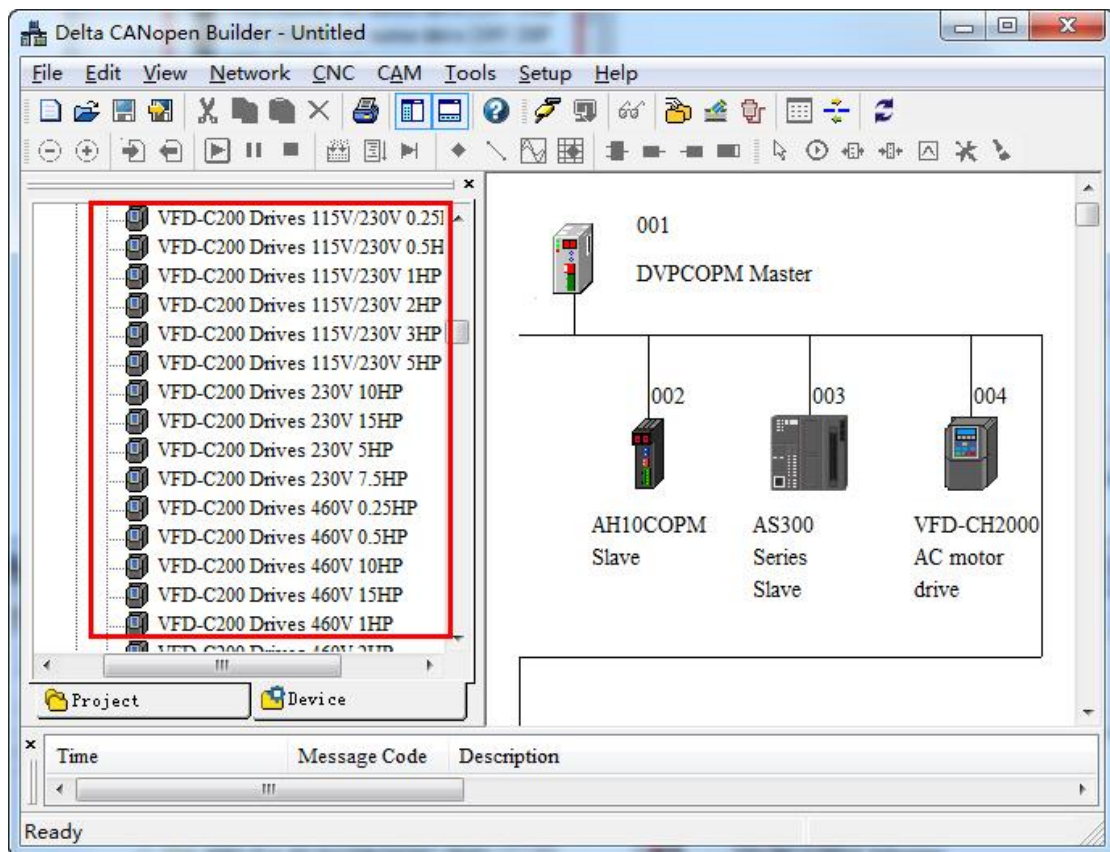
CANopen Builder V6.00 and above support DVP15MC11T. After the new CANopen Builder software is started, the project types are displayed for option as shown in the figure below.

(Note: Currently it is available for Chinese version only.)



2. **The EDS files of AH10COPM, AS300, CH2000, MS300 and MH300 series AC motor drives as slaves have been added to the V6.00 software as shown in the red box of the following figure.**





Download the software at

<http://www.deltaww.com/services/DownloadCenter2.aspx?secID=8&pid=2&tid=0&CID=06&itemID=060301&typeID=1&downloadID=,&title=-- Select Product Series --&dataType=8;&check=1&hl=en-US>

品质至上
信赖第一
追求卓越

QUALITY
RELIABILITY
EXCELLENCE