



# Technical Announcement

IABG, DELTA ELECTRONICS, INC

Product	AH10EN-5A, CMC-EIP01, EIP Builder, DCISoft, EDS Builder	Applicable Model	AH10EN-5A, AS300 Series, CMC-EIP01	Confidentiality Level	<input checked="" type="checkbox"/> General <input type="checkbox"/> Classified <input type="checkbox"/> Top secret
				ECN No.	N/A
Published by	PLCБУ	Publisher	Chung Wei Chen	Publication No.	134A-P-DCISoft- TAN02-EN
				Date of Publication	July 25, 2016
Published to	Sales/Product managers of TW, DGC, DPR, DGB, DMX, DEN, DIN, DESG, DEJ, DEK				

Object: AH10EN-5A firmware version 2.00 is released.

CMC-EIP01 firmware version 1.06 is released.

EIP Builder software version 1.01 of ISPSOft V3.02 is released.

DCISoft software version 1.17 is released.

EDS Builder V3.00 is released.

Purpose: AH10EN-5A V2.00, CMC-EIP01 V1.06, EIP Builder V1.01, EDS Builder V3.00 and DCISoft V1.17 are released along with the Delta EtherNet/IP related products. The functions which are modified and the functions which are added are described as below.

A. AH10EN-5A firmware version 2.00 includes new and modified functions as described below.

1. AH10EN-5A now supports EtherNet/IP

EtherNet/IP works on a TCP/UDP/IP based Ethernet network and uses most widely deployed collections of Ethernet standards to provide a broad range of applications in different industries that require high-speed and stability such as Factory Automation (FA), Building Automation (BA), Process Automation (PA) and so on.

AH10EN-5A of Delta AH series is an Ethernet communication module, supporting MODBUS TCP communication protocol. For the benefits of users, AH10EN-5A V2.00 now supports EtherNet/IP communication protocol as well; simply upgraded the AH10EN-5A to firmware V2.00 to have this feature.

AH10EN-5A supports lots of EtherNet/IP related functions, including serving as network redundant, allowing data mapping cyclically or non-cyclically via EtherNet/IP, acting as a scanner / an adapter and many more. Users can also download the EDS file and connect to the EtherNet/IP devices of other brands with the downloaded EDS file.

Software

For EtherNet/IP functions of AH10EN-5A, please download Delta EtherNet/IP software, EIP Builder V1.01, which can be called through the ISPSOFT software. Download the software EIP Builder V1.01 and ISPSOFT V3.02 from the links below:

ISPSOFT:

<http://www.deltaww.com/services/DownloadCenter2.aspx?secID=8&pid=2&tid=0&CID=06&itemID=060301&typeID=1&downloadID=,&title=-- Select Product Series --&dataType=8;&check=1&hl=en-US>

EIP Builder:

[http://www.deltaww.com/filecenter/Products/download/06/060301/Software/DELTA\\_IA-IFS\\_EIP-Builder-V1-01\\_SW\\_20160608.zip](http://www.deltaww.com/filecenter/Products/download/06/060301/Software/DELTA_IA-IFS_EIP-Builder-V1-01_SW_20160608.zip)

B. CMC-EIP01 firmware version 1.06 includes new and modified functions as described below.

1. One more CIP connection is added.

1) CMC-EIP01 now can edit the VFD-C2000 parameters in the EtherNet/IP mapping table (user-defined addresses). Users can select VFD-C2000 for editing. (Editing the mapped parameters cannot be done in V1.04.)

2) 32 sets of IN/OUT parameters are available for this new connection.

(The parameter sets for IN/OUT were 16/3 for V1.04)

For more information on CIP Connection setups, please refer to its operation manual. The parameter sets for mapping are listed below.

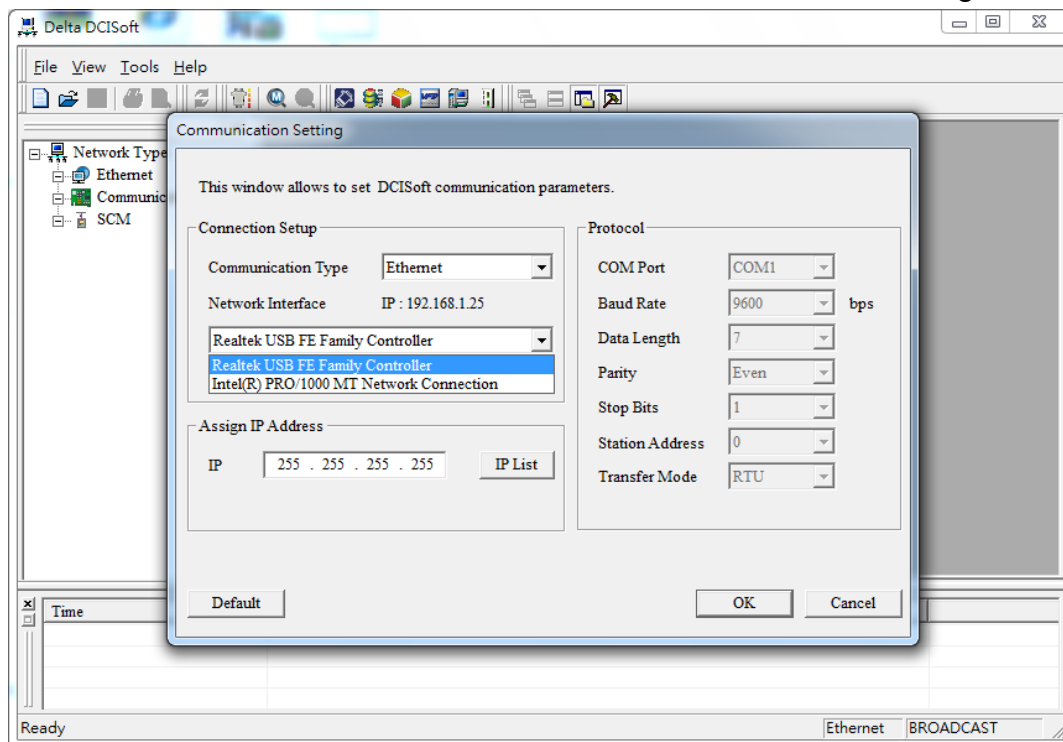
IN		OUT	
[0]	[2100H]	[0]	[2000H]
[1]	[2101H]	[1]	[2001H]
[2]	[2102H]	[2]	[2002H]
[3]	[2103H]	[3]	Reserved
[4]	[2104H]	[4]	[6000H]
[5]	[2105H]	[5]	[6001H]
[6]	[2106H]	[6]	[6002H]
[7]	[2107H]	[7]	[6003H]
[8]	[2108H]	[8]	[6004H]
[9]	[2109H]	[9]	[6005H]
[10]	[210AH]	[10]	[6006H]
[11]	[210BH]	[11]	[6007H]
[12]	[210CH]	[12]	Reserved
[13]	[210DH]	[13]	Reserved
[14]	[210EH]	[14]	Reserved
[15]	[210FH]	[15]	Reserved
[16]	[6100H]	[16]	[FFFFH]: user-defined address
[17]	[6101H]	[17]	[FFFFH]: user-defined address
[18]	[6102H]	[18]	[FFFFH]: user-defined address
[19]	[6103H]	[19]	[FFFFH]: user-defined address
[20]	[6104H]	[20]	[FFFFH]: user-defined address
[21]	[6105H]	[21]	[FFFFH]: user-defined address
[22]	[6106H]	[22]	[FFFFH]: user-defined address
[23]	Reserved	[23]	[FFFFH]: user-defined address
[24]	Reserved	[24]	[FFFFH]: user-defined address
[25]	[FFFFH]: user-defined address	[25]	[FFFFH]: user-defined address
[26]	[FFFFH]: user-defined address	[26]	[FFFFH]: user-defined address
[27]	[FFFFH]: user-defined address	[27]	[FFFFH]: user-defined address
[28]	[FFFFH]: user-defined address	[28]	[FFFFH]: user-defined address
[29]	[FFFFH]: user-defined address	[29]	[FFFFH]: user-defined address
[30]	[FFFFH]: user-defined address	[30]	[FFFFH]: user-defined address
[31]	[FFFFH]: user-defined address	[31]	[FFFFH]: user-defined address

Note: CMC-EIP01 V1.06 should work with VFD-C2000 V2.01.

2. The number of connections via MODBUS TCP has increased for CMC-EIP01.  
The number of connections via MODBUS TCP has increased for CMC-EIP01 from 1 to 4, providing more MODBUS TCP connections with inverters for software and PLC systems.
3. CMC-EIP01 now supports Bootstrap Protocol (BOOTP).  
Users can set up the network via the BOOTP server software from Delta or other brands. Please select BOOTP for CMC-EIP01 via DCISoft V1.16 or a keypad. BOOTP server software can be found in the section of IP management tool of the EIP Builder.

C. DCISoft software version 1.17 includes new and modified functions as described below.

1. The network card now can be selected in the Communication Setting section.



2. SCMSoft now supports AS300 series communication modules ASAS00SCM-A.

Old	Only supported DVPSCM12-SL, DVPSCM52-SL, AH10SCM-5A			
New	Now supports AS00SCM-A communication modules and can work with the following extension cards, AS-F232, AS-F422, and AS-F485.			
Applications	Users can self-define the formats of the communication packets.			
		<b>DVPSCM12-SL</b>	<b>DVPSCM52-SL</b>	<b>AH10SCM-5A</b>
	<b>COM Port Setups</b>	Y	Y	Y
	<b>UD Link</b>	Y	Y	Y
	<b>Log</b>	Y	Y	Y
	<b>BACnet</b>	N	Y	Y
				<b>AS00SCM-A</b>
				N (Set up via HWCONFIG)

Download the software DCISoft V1.17 from the link below:

<http://www.deltaww.com/services/DownloadCenter2.aspx?secID=8&pid=2&tid=0&CID=06&itemID=060301&TypeID=1&downloadID=,&title=-- Select Product Series --&dataType=8;&check=1&hl=en-US>

品質至上  
信賴第一  
追求卓越

QUALITY  
RELIABILITY  
EXCELLENCE

D. EIP Builder V1.01 of ISPSOft V3.02

EIP Builder V1.01 now supports EtherNet/IP for AH10EN-5A V2.0, AS300 V1.0, and CMC-EIP01 V1.06. For more information on EtherNet/IP setups, please refer to its manual.

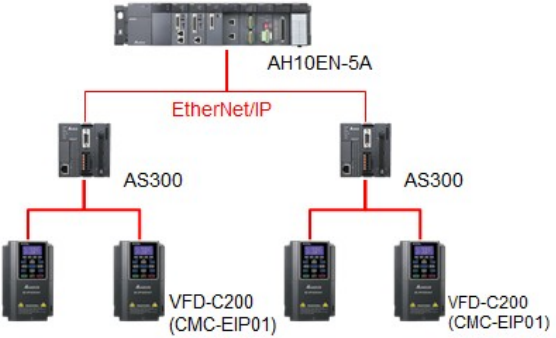
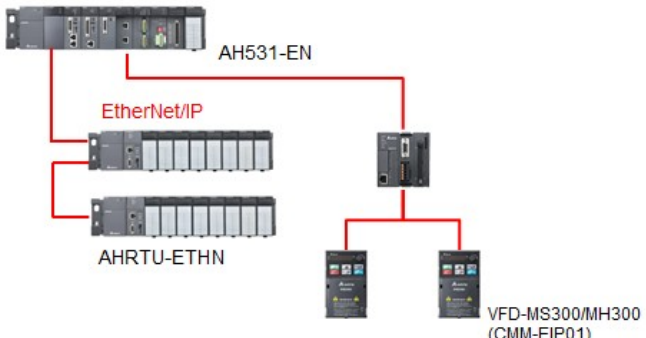
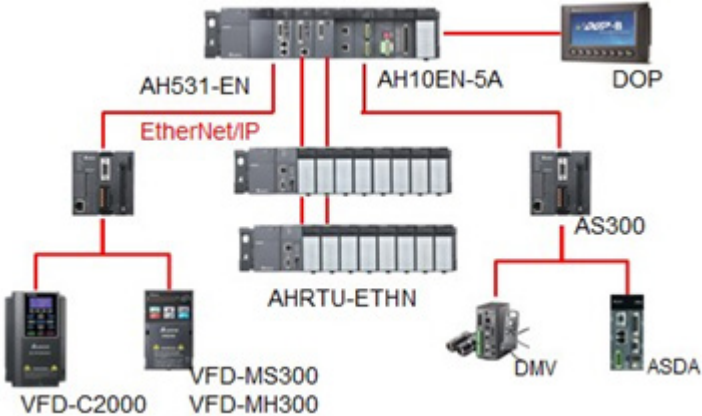
**Specification:**

EIP Builder V1.01 supports the following Delta products and their specifications.

	PLC		Inverter
	AH10EN-5A	AS300	CMC-EIP01 (VFD-C2000)
Version	V2.0	V1.0	V1.06 (inverter board: V2.01)
Type (scanner/adaptor)	scanner / adaptor	scanner / adaptor	adaptor
Number of TCP connections	64	16	8
Number of CIP connections	64	32	16
Implicit Message (data mapping cyclically)	●	●	●
Explicit Message (data mapping non-cyclically)	●	●	●
RPI (ms)	1~1000	5~1000	5~1000
PPS	10,000	3,000	800

※ Models added to support EtherNet/IP will be updated on Delta official website.  
Please check the complete list on our website.

Delta EtherNet/IP related products along with high-speed EtherNet/IP communication, EtherNet/IP RIO, and One Network will be released consecutively in the year of 2016. There are 3 phases to go.

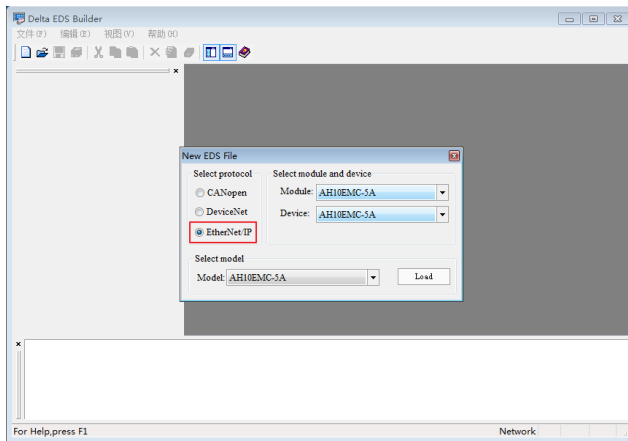
Phase I June 06, 2016	High-speed EtherNet/IP communication	Availability
		AH10EN-5A, AS300 series, VFD-C2000 series (CMC-EIP01)
Phase II September, 2016	EtherNet/IP RIO	Availability
		AH531-EN, AHRTU-ETHN, VFD-MS300, MH300 (CMM-EIP01)
Phase II September, 2016	One Network	Availability
		DOP series, DMV series, ASDA series

品質至上  
信賴第一  
追求卓越

QUALITY  
RELIABILITY  
EXCELLENCE

#### E. EDS Builder V3.00

1. Add and edit the EtherNet/IP EDS files.
2. Create an EtherNet/IP EDS file as the image shown below.



\*Please note for the time being AS300 series and AH10EMC models are only available for Taiwan and China. AS300 series and AH10EMC models will go global November 2016 and January 2017 respectively.

Download the software EDS Builder V3.00 from the link below:

<http://www.deltaww.com/services/DownloadCenter2.aspx?secID=8&pid=2&tid=0&CID=06&itmID=060301&TypeID=1&downloadID=,&title=-- Select Product Series --&dataType=8;&check=1&hl=en-US>